

# Service Manual

Room Air Conditioner

CS-E15CKP CU-E15CKP5



## ⚠ WARNING

This service information is designed for experienced repair technicians only and is not designed for use by the general public. It does not contain warnings or cautions to advise non-technical individuals of potential dangers in attempting to service a product. Products powered by electricity should be serviced or repaired only by experienced professional technicians. Any attempt to service or repair the product or products dealt with in this service information by anyone else could result in serious injury or death.

## ⚠ PRECAUTION OF LOW TEMPERATURE

In order to avoid frostbite, be assured of no refrigerant leakage during the installation or repairing of refrigeration circuit.

## CONTENTS

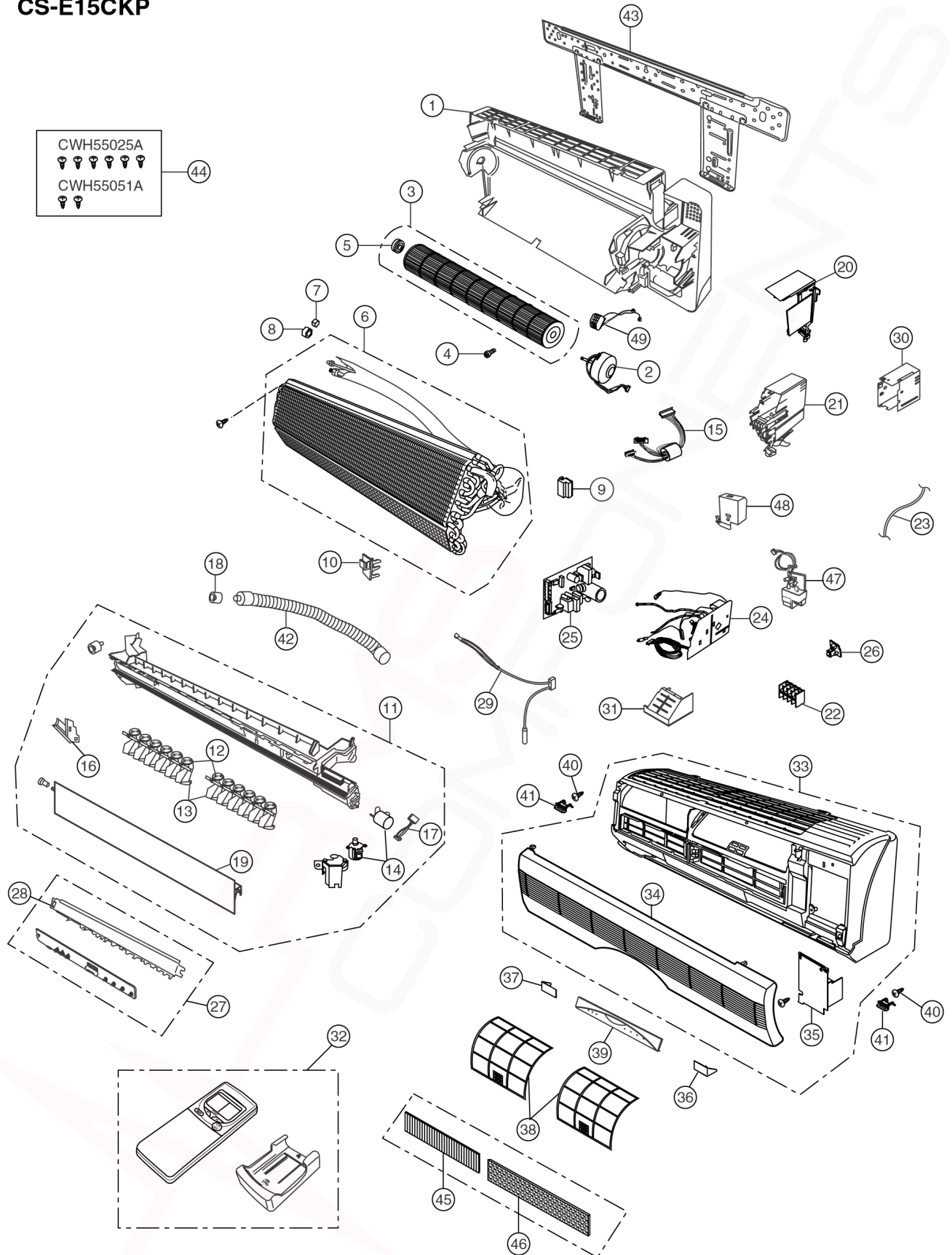
	Page		Page
1 Features .....	2	10 Installation And Servicing Air Conditioner Using R410A .....	46
2 Functions .....	3	11 Installation Instructions .....	57
3 Product Specifications .....	6	12 Servicing Information .....	66
4 Dimensions .....	8	13 Technical Data .....	75
5 Refrigeration Cycle Diagram .....	10	14 Exploded View .....	77
6 Block Diagram .....	11	15 Replacement Parts List .....	78
7 Wiring Diagram .....	12	16 Exploded View .....	79
8 Operation Details .....	13	17 Replacement Parts List .....	80
9 Operating Instructions .....	38	18 Electronic Circuit Diagram .....	81

# Panasonic

© 2003 Matsushita Industrial Corp. Sdn. Bhd. (11969-T). All rights reserved. Unauthorized copying and distribution is a violation of law.

# 14 Exploded View

CS-E15CKP



Note:

The above exploded view is for the purpose of parts disassembly and replacement.

The non-numbered parts are not kept as standard service parts.

# 15 Replacement Parts List

<Model: CS-E15CKP>

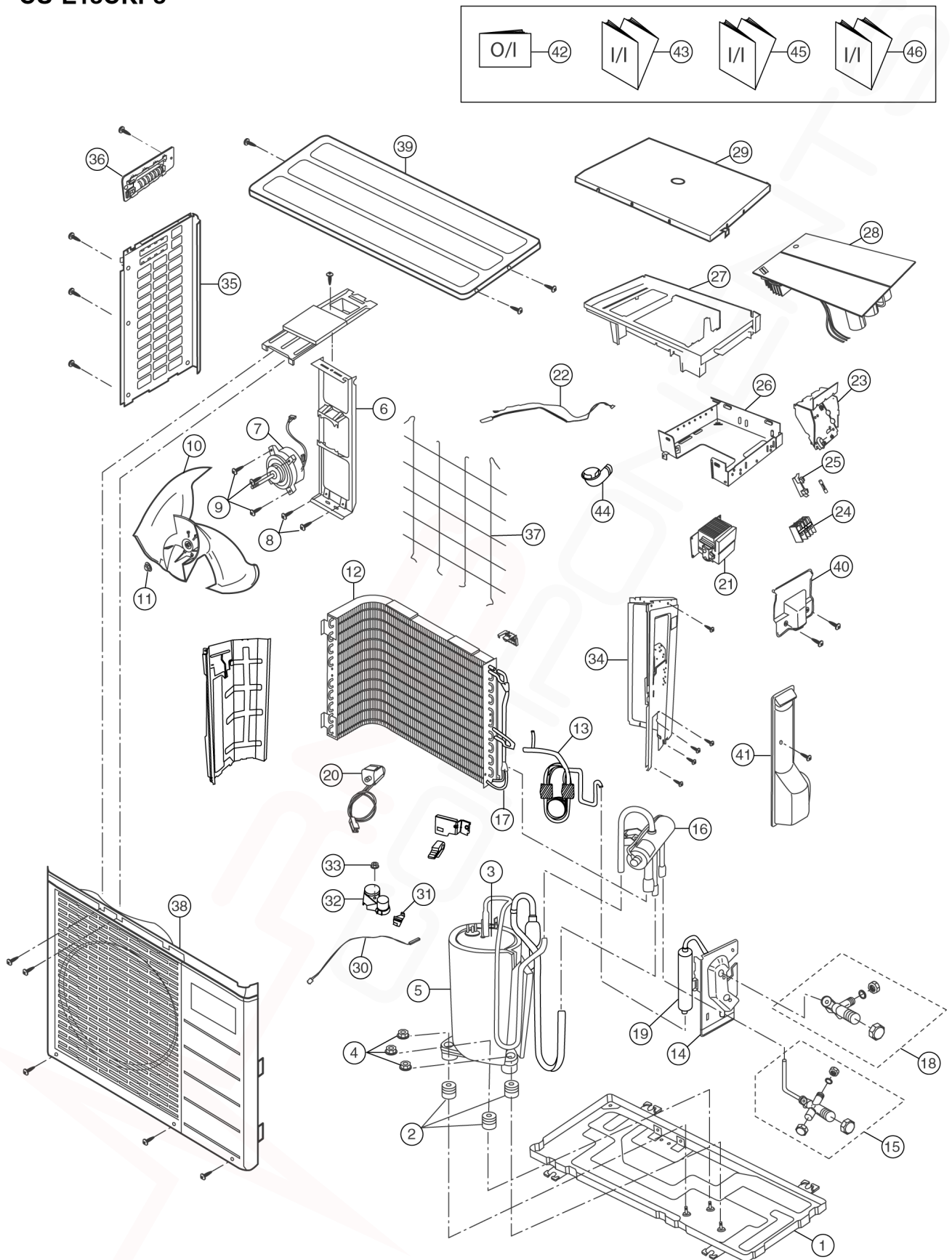
REF NO.	DESCRIPTION & NAME	QTY.	CS-E15CKP	REMARKS
1	CHASSY COMPLETE	1	CWD50C1246	
2	FAN MOTOR	1	CWA981056	O
3	CROSS-FLOW FAN COMPLETE	1	CWH02C1012	
4	SCREW - CROSS-FLOW FAN	1	CWH4580304	
5	BEARING ASSY	1	CWH64K007	
6	EVAPORATOR	1	CWB30C1260	
7	FLARE NUT (1/4)	1	CWH6002140	
8	FLARE NUT	1	CWT25007 (1/2)	
9	ANTI-VIBRATION BUSHING	1	-	
10	INTAKE AIR SENSOR HOLDER	1	CWH32142	
11	DISCHARGE GRILLE COMPLETE	1	CWE20C2120	
12	VANE	12	CWE241088	
13	CONNECTING BAR	2	CWE261035	
14	AIR SWING MOTOR	2	CWA98260	O
15	LEADWIRE	1	CWA67C3849	
16	FULCRUM	1	CWH621013	
17	LEADWIRE - AIR SWING MOTOR	1	CWA67C3977	
18	CAP COMPLETE	1	CWH52C1001	
19	VANE	1	CWE241070	
20	PARTICULAR PIECE	1	CWD932162	
21	CONTROL BOARD	1	CWH102103	
22	TERMINAL BOARD COMPLETE	1	CWA28C2128	O
23	POWER SUPPLY CORD	1	CWA20C2238	
24	ELECTRONIC CONTROLLER-MAIN	1	CWA73C1409	O
25	ELECTRONIC CONTROLLER -P.SUPPLY	1	CWA742616	O
26	PCB RECEIVER	1	CWA742724	
27	INDICATOR COMPLETE	1	CWE39C1067	
28	INDICATOR HOLDER	1	CWD932163	
29	SENSOR COMPLETE	1	CWA50C2122	O
30	CONTROL BOARD COVER (TOP)	1	CWH131091	
31	CONTROL BOARD COVER (FRONT)	1	CWH131090	
32	REMOTE CONTROL COMPLETE	1	CWA75C2295	O
33	FRONT GRILLE COMPLETE	1	CWE11C2756	
34	INTAKE GRILLE	1	CWE22C1081	
35	GRILLE DOOR	1	CWE141033	
36	DECORATION BASE (RIGHT)	1	CWE351067	
37	DECORATION BASE (LEFT)	1	CWE351068	
38	AIR FILTER	2	CWD001047	
39	CONTROL PANEL	1	CWE312291	
40	SCREW FOR FRONT GRILLE	2	XTN4+16C	
41	CAP FOR FRONT GRILLE	2	CWH521062	
42	DRAIN HOSE	1	CWH85285	
43	INSTALLING HOLDER ASSY	1	CWH36K1006	
44	BAG COMPLETE FOR INSTALLATION	1	CWH82C067	
45	AIR PURIFYING FILTER	1	CWMD00C0001	O
46	TRIPLE DEODORIZING FILTER	1	CWMD00C0004	O
47	ELECTRONIC CONTROLLER - IONIZER	1	CWA743099	
48	CASING - IONIZER	1	CWD932228	
49	ION GENERATOR	1	CWH94C0001	

(Note)

- All parts are supplied from MAICO, Malaysia (Vendor Code: 061).
- "O" marked parts are recommended to be kept in stock.

# 16 Exploded View

CU-E15CKP5



## Note:

The above exploded view is for the purpose of parts disassembly and replacement.

The non-numbered parts are not kept as standard service parts.

# 17 Replacement Parts List

<Model: CU-E15CKP5>

REF NO.	DESCRIPTION & NAME	QTY.	CU-E15CKP5	REMARKS
1	CHASSY ASSY	1	CWD50K2073	
2	ANTI-VIBRATION BUSHING	3	CWH50077	
3	COMPRESSOR	1	5CS102XEC	O
4	NUT-COMPRESSOR MOUNT	3	CWH56000	
5	SOUND PROOF MATERIAL	1	CWG302111	
6	FAN MOTOR BRACKET	1	CWD541030	
7	FAN MOTOR	1	CWA951126	O
8	SCREW - FAN MOTOR BRACKET	2	CWH551060	
9	SCREW - FAN MOTOR MOUNT	4	CWH55406	
10	PROPELLER FAN ASSY	1	CWH03K1006	
11	NUT - PROPELLER FAN	1	CWH56053	
12	CONDENSER	1	CWB32C1146	
13	TUBE ASS'Y CO (CAP./CHK VALVE)	1	CWT01C2361	
14	HOLDER-COUPPLING COMPLETE	1	CWT01C2622	O
15	3 WAYS VALVE	1	CWB011075	O
16	4 WAYS VALVE	1	CWB001011	
17	STRAINER	1	CWMB110002	
18	2 WAYS VALVE	1	CWB021065	O
19	DRYER	1	CWB101015	
20	V-COIL COMPLETE	1	CWA43C2072	
21	REACTOR	1	CWA421051	
22	SENSOR COMPLETE	1	CWA50C2115	
23	CONTROL BOARD	1	CWH102122	
24	TERMINAL BOARD ASSY	1	CWA28K1036	
25	FUSE HOLDERS	1	K5D203BBA002	
26	CONTROL BOARD	1	CWH102114	
27	CONTROL BOARD	1	CWH102115	
28	ELECTRONIC CONTROLLER	1	CWA73C1410	
29	CONTROL BOARD COVER	1	CWH131104	
30	SENSOR COMPLETE	1	CWA50C2066	
31	HOLDER SENSOR	1	CWH321010	
32	TERMINAL COVER	1	CWH171001	
33	NUT-TERMINAL COVER	1	CWH7080300	
34	CABINET SIDE PLATE CO.	1	CWE04C1011	
35	CABINET SIDE PLATE (LEFT)	1	CWE041031A	
36	HANDLE	1	CWE161010	
37	WIRE NET	1	CWD041027	
38	CABINET FRONT PLATE CO.	1	CWE06C1039	
39	CABINET TOP PLATE	1	CWE031014A	
40	CONTROL BOARD COVER	1	CWH131110	
41	CONTROL BOARD COVER	1	CWH131093	
42	OPERATING INSTRUCTION	1	CWF563698	
43	INSTALLATION INSTRUCTION	1	CWF612334	
44	L-TUBE	1	CWH5850080	
45	INSTALLATION INSTRUCTION	1	CWF612335	
46	INSTALLATION INSTRUCTION	1	CWF612336	

(Note)

- All parts are supplied from MAICO, Malaysia (Vendor Code: 061).
- "O" marked parts are recommended to be kept in stock.