

Service Manual

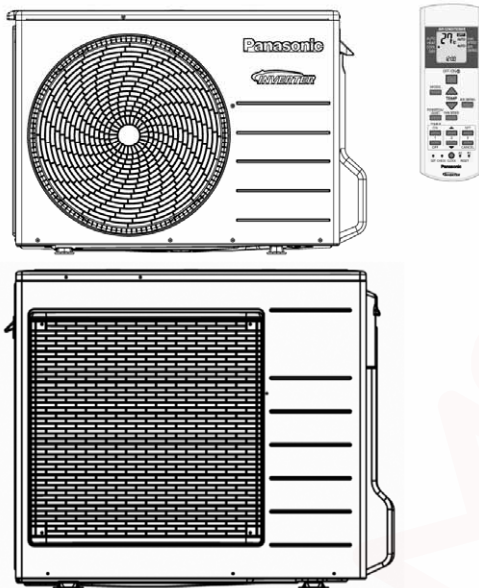
Air Conditioner



Indoor Unit
CS-E12QB4RW
CS-E18QB4RW

Outdoor Unit
CU-E12QB4R
CU-E18QB4R

Destination
Oceania

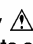


Please file and use this manual together with the service manual for Model No. CU-4E23QBR CU-4E27QBR CU-5E34QBR, Order No. PAPAMY1404064CE

WARNING

This service information is designed for experienced repair technicians only and is not designed for use by the general public. It does not contain warnings or cautions to advise non-technical individuals of potential dangers in attempting to service a product. Products powered by electricity should be serviced or repaired only by experienced professional technicians. Any attempt to service or repair the products dealt with in this service information by anyone else could result in serious injury or death.

IMPORTANT SAFETY NOTICE

There are special components used in this equipment which are important for safety. These parts are marked by  in the Schematic Diagrams, Circuit Board Diagrams, Exploded Views and Replacement Parts List. It is essential that these critical parts should be replaced with manufacturer's specified parts to prevent shock, fire or other hazards. Do not modify the original design without permission of manufacturer.



PRECAUTION OF LOW TEMPERATURE

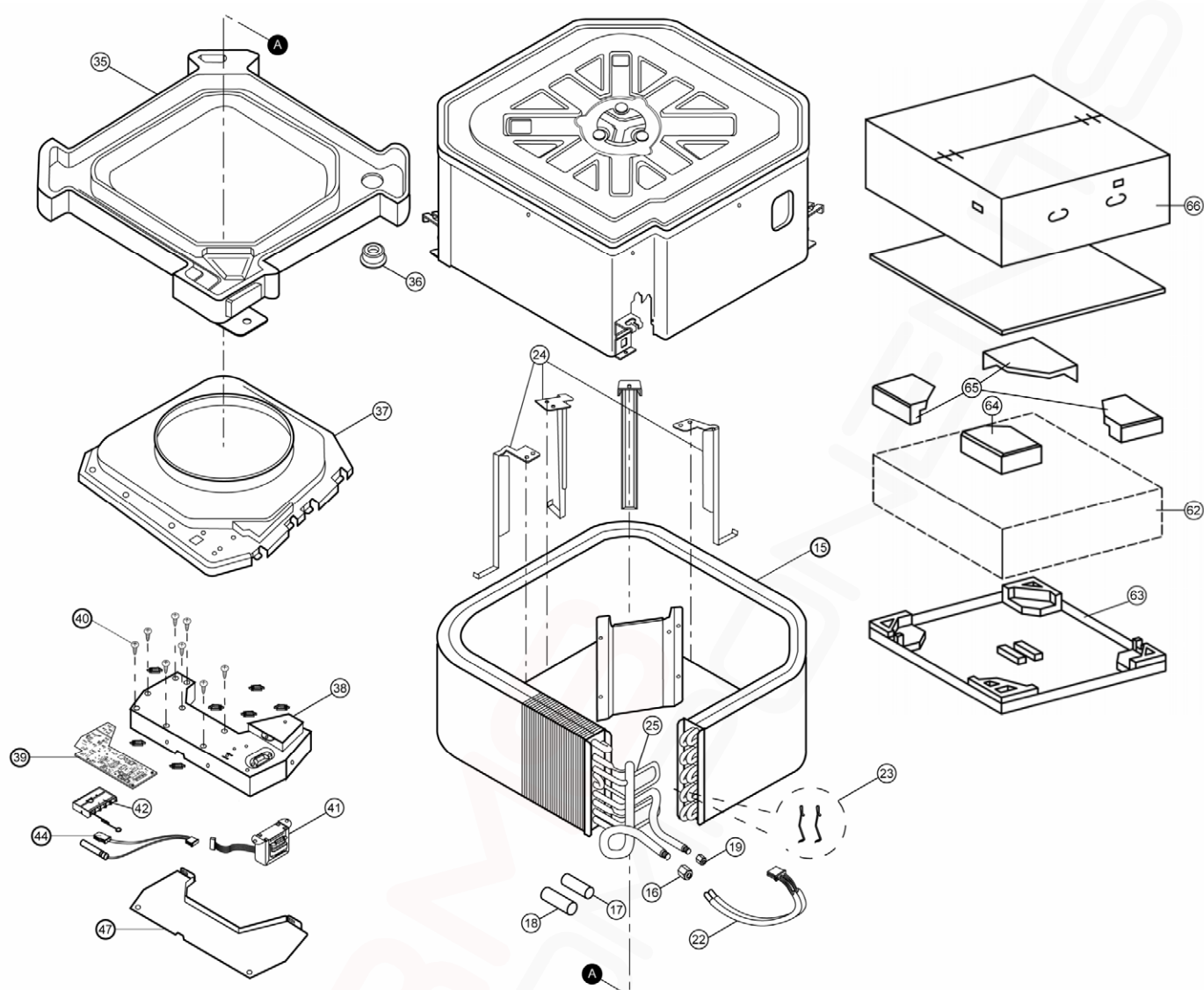
In order to avoid frostbite, be assured of no refrigerant leakage during the installation or repairing of refrigerant circuit.

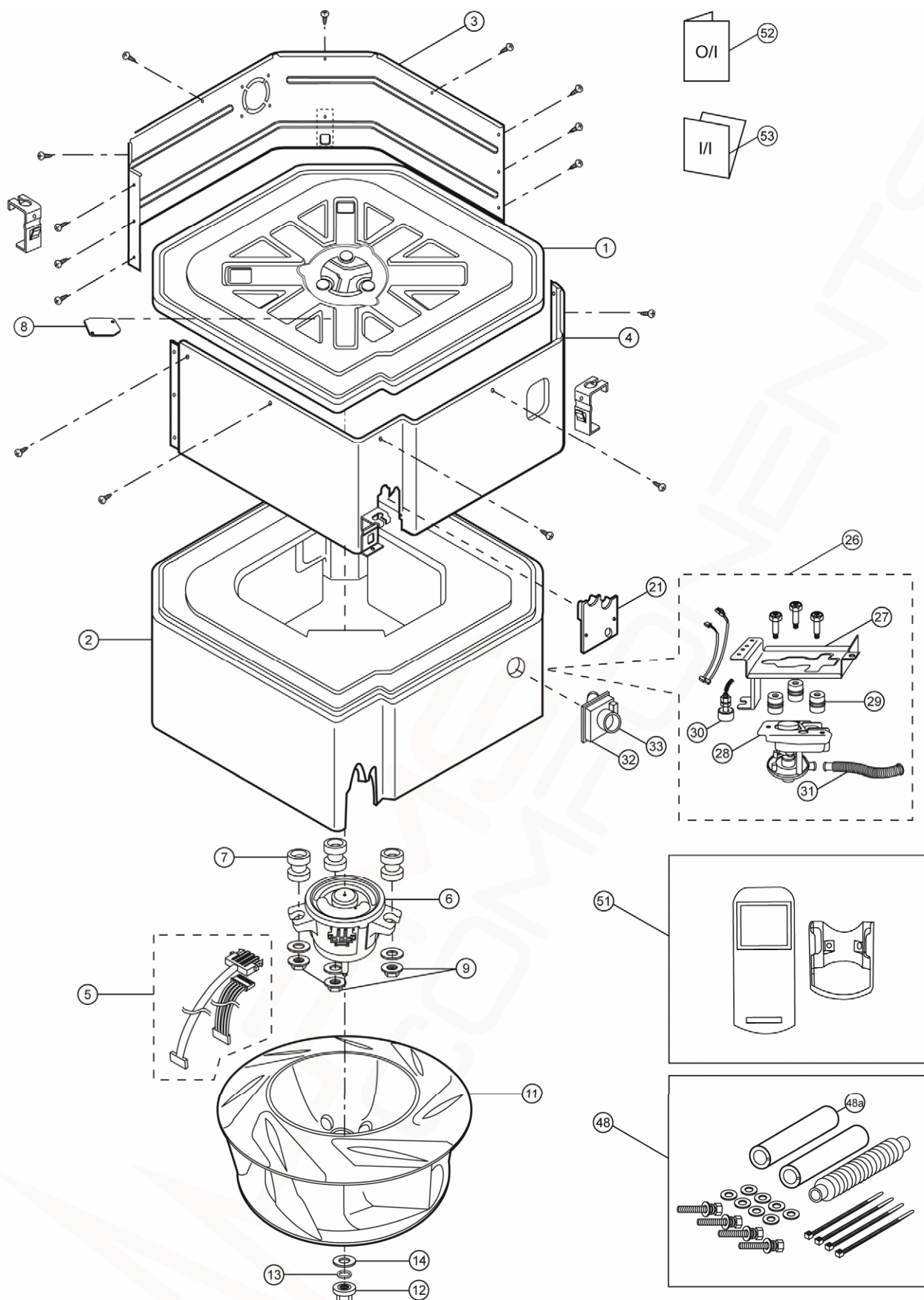
Panasonic®

© Panasonic Corporation 2014

19. Exploded View and Replacement Parts List

19.1 Indoor Unit





Note:
The above exploded view is for the purpose of parts disassembly and replacement.
The non-numbered parts are not kept as standard service parts.

<Model: CS-E12QB4RW CS-E18QB4RW>

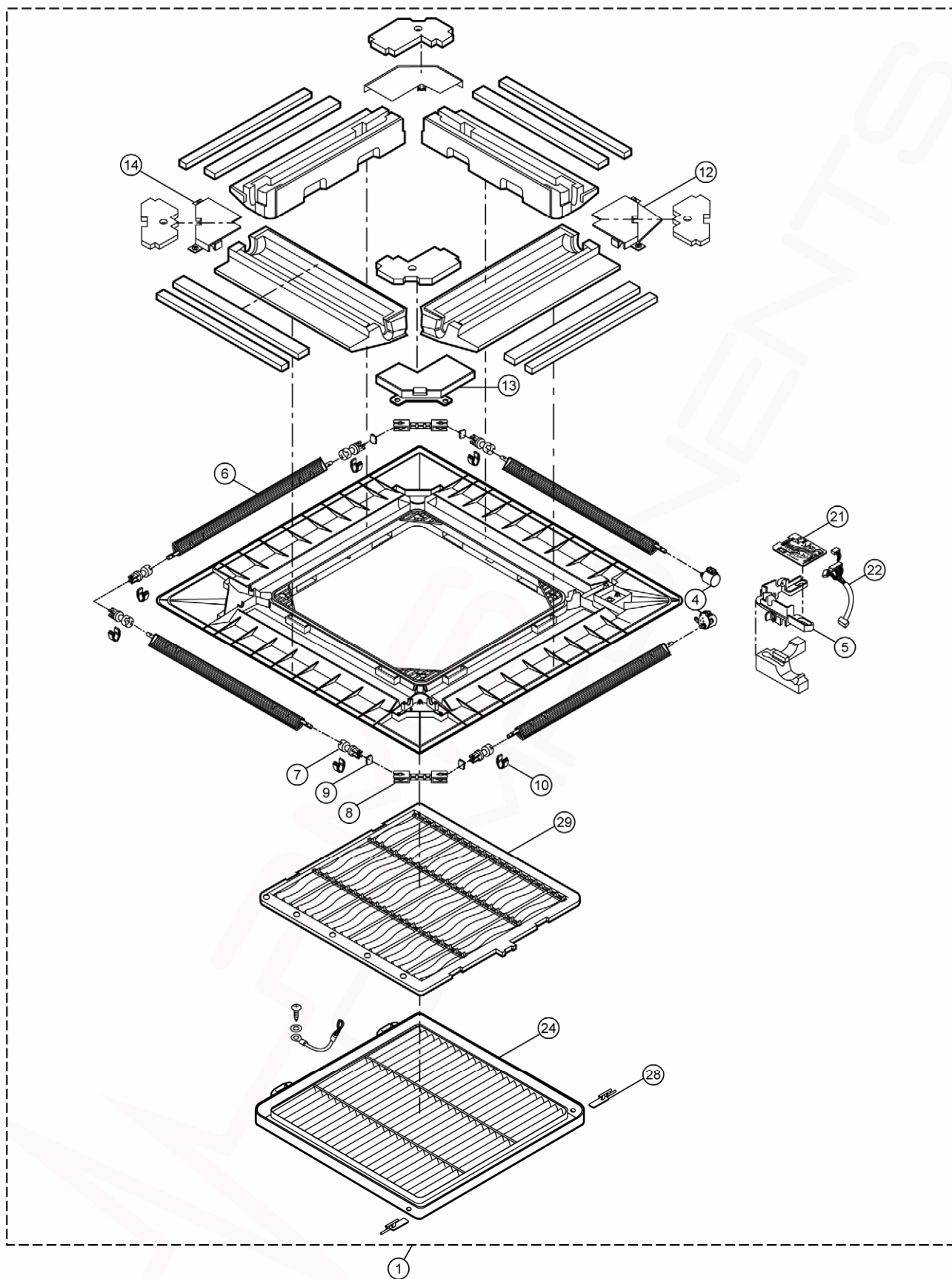
SAFETY	REF. NO.	PART NAME & DESCRIPTION	QTY	CS-E12QB4RW	CS-E18QB4RW	REMARK
	1	BASE PAN ASS'Y	1	CWD52K1100	←	
	2	INNER POLYSTYRENE COMPLETE	1	CWG07C1047	←	
	3	CABINET SIDE PLATE ASS'Y	1	CWE041121	←	
	4	CABINET SIDE PLATE ASS'Y	1	CWE041122	←	
	5	LEAD WIRE - FAN MOTOR	1	CWA67C5136	←	O
⚠	6	FAN MOTOR	1	EHDS50A40AC	←	O
	7	ANTI - VIBRATION BUSHING	3	CWH501065	←	
	8	CORD HOLDER	1	CWD741024	←	
	9	SCREW - FAN MOTOR	3	CWH561058	←	
	11	TURBO FAN	1	CWH03K1022	←	
	12	NUT for TURBO FAN	1	CWH561042	←	
	13	SP WASHER	1	XWA8BFJ	←	
	14	WASHER	1	XWG8H22FJ	←	
	15	EVAPORATOR COMPLETE	1	CWB30C4888	←	
	16	FLARE NUT (1/2")	1	CWT251032	←	
	17	HEATPROOF TUBE	1	CWG021024	←	
	18	HEATPROOF TUBE	1	CWG021064	←	
	19	FLARE NUT (1/4")	1	CWT251030	←	
	21	PIPE COVER	1	CWD93C1050	←	
	22	SENSOR - EVAPORATOR	1	CWA50C2549	←	
	23	HOLDER SENSOR	2	CWH32143	←	
	24	EVAPORATOR SUPPORTER	3	CWD911529A	←	
	25	TUBE ASS'Y (CAPIL. TUBE)	1	CWT07K1188	←	
	26	DRAIN PUMP COMPLETE	1	CWB53C1025	←	O
	27	PANEL DRAIN PUMP ASS'Y	1	CWD93K1021	←	
	28	DRAIN PUMP	1	CWB532059	←	
	29	ANTI - VIBRATION BUSHING	3	CWH501080	←	
	30	FLOAT SWITCH - DRAIN PUMP	1	CWA121233	←	O
	31	FLEXIBLE PIPE	1	CWH85C1033	←	
	32	DRAIN NOZZLE	1	CWH411011	←	
	33	DRAIN HOSE HEAT INSULATION	1	CWG321050	←	
	35	DRAIN PAN - COMPLETE	1	CWH40C1034	←	
	36	DRAIN PLUG	1	CWB821008	←	
	37	AIR GUIDER BLOWER WHEEL	1	CWD321058	←	
	38	CONTROL BOARD CASING	1	CWH10K1102	←	
⚠	39	ELECTRONIC CONTROLLER (MAIN)	1	CWA73C8576	CWA73C8577	O
	40	SPACER	6	CWH541026	←	
	41	TRANSFORMER	1	CWA40C1030	←	O
⚠	42	TERMINAL BOARD ASS'Y	1	CWA28K1321	←	O
	44	LEADWIRE-AIR TEMP. SENSOR	1	CWA68C1507	←	O
	47	CONTROL BOARD COVER COM.	1	CWH13C1312	←	
	48	ACCESSORY COMPLETE	1	CWH82C1270	←	
	48A	HEATPROOF TUBE	1	CWG021025	←	
	51	WIRELESS REMOTE CONTROL COMPLETE	1	CWA75C4347	←	O
	52	OPERATING INSTRUCTION	1	CWF569675	←	

SAFETY	REF. NO.	PART NAME & DESCRIPTION	QTY	CS-E12QB4RW	CS-E18QB4RW	REMARK
	53	INSTALLATION INSTRUCTION	1	CWF616460	←	
	62	BAG	1	CWG86420	←	
	63	BASE BOARD-COMPLETE	1	CWG62C1047	←	
	64	SHOCK ABSORBER	1	CWG712509	←	
	65	SHOCK ABSORBER	3	CWG712510	←	
	66	C.C. CASE	1	CWG565693	←	

(Note)

- All parts are supplied from PAPAMY, Malaysia (Vendor Code: 00029488).
- “O” marked parts are recommended to be kept in stock.

19.2 CZ-BT20E (Front Grille Complete)



Note:

The above exploded view is for the purpose of parts disassembly and replacement.
The non-numbered parts are not kept as standard service parts.

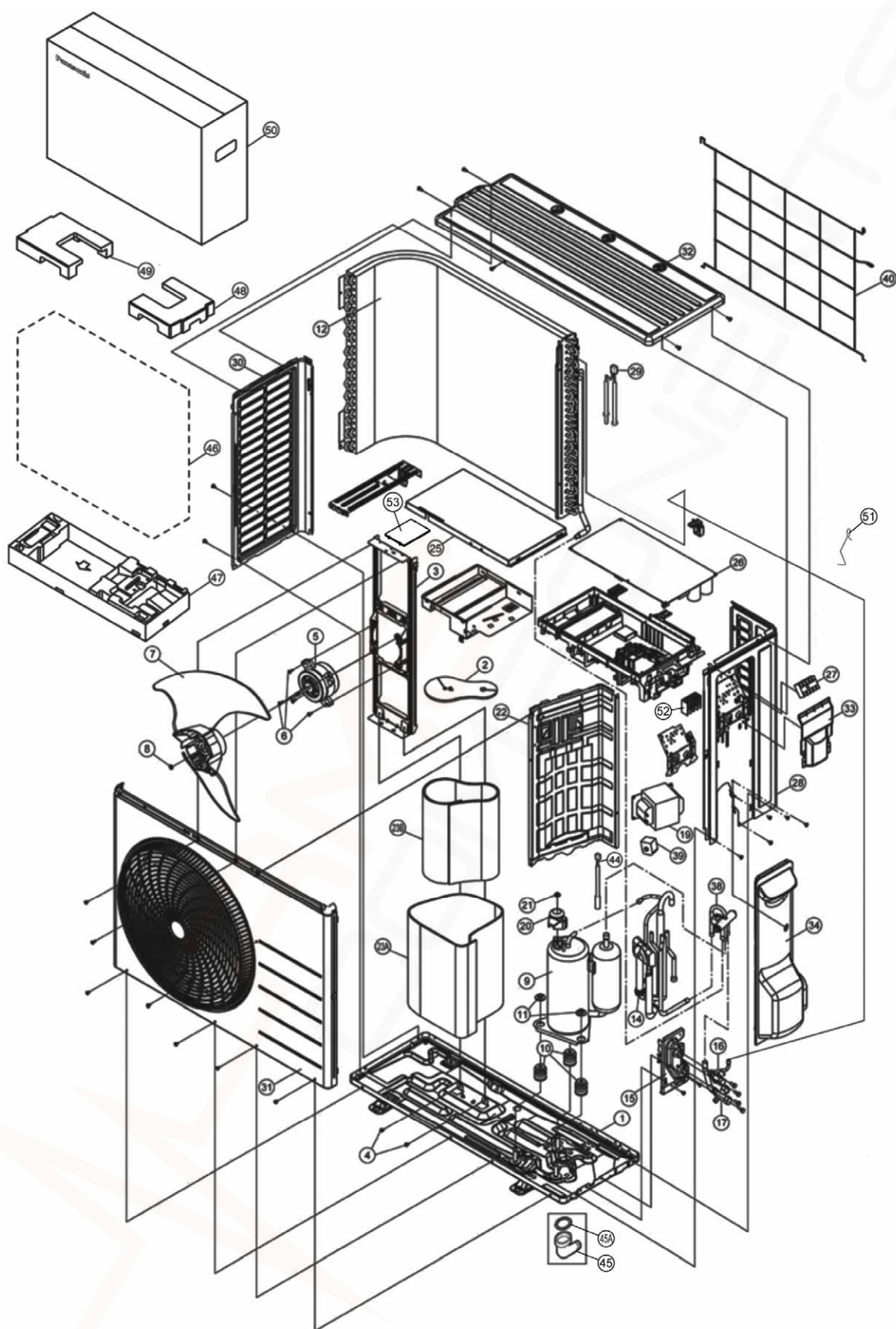
SAFETY	REF. NO.	PART NAME & DESCRIPTION	QTY	CZ-BT20E	REMARK
	1	FRONT GRILLE - COMPLETE	1	CWE11C3105	
	4	A.S MOTOR DC SINGLE 12V 250 OHM	2	CWA981105J	O
	5	BRACKET - A.S.MOTOR	1	CWD932522	
	6	VANE	4	CWE241159	
	7	SHAFT	6	CWH631038	
	8	SHAFT	2	CWH631045	
	9	CONNECTOR - SHAFT	4	CWH081007	
	10	BEARING	6	CWH641008	O
	12	PLATE COVER FOR A.S.MOTOR	1	CWD911459	
	13	PLATE COVER FOR CONNECTING SHAFT	2	CWD911460	
	14	PLATE COVER FOR END SHAFT	1	CWD911461	
	21	ELECTRONIC CONT. (RECEIVER & INDICATOR)	1	CWA743610	
	22	LEAD WIRE - COMPLETE	1	CWA67C5576	
	24	INTAKE GRILLE	1	CWE221131	
	28	LEVER ARM	2	CWH651029	
	29	AIR FILTER	1	CWD001142	O

(Note)

- All parts are supplied from PAPAMY, Malaysia (Vendor Code: 00029488).
- "O" marked parts are recommended to be kept in stock.

19.3 Outdoor Unit

19.3.1 CU-E12QB4R



Note:

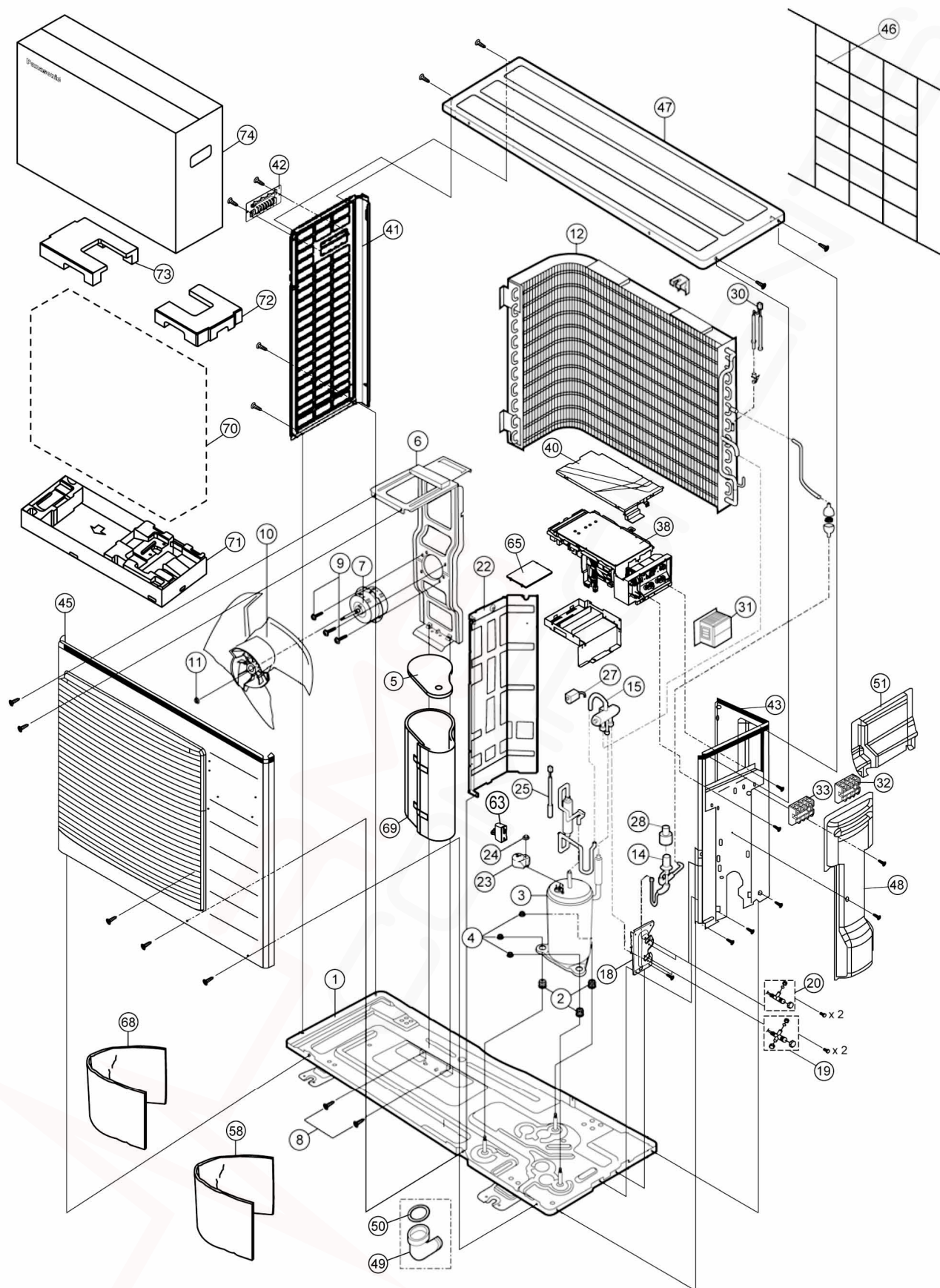
The above exploded view is for the purpose of parts disassembly and replacement.
The non-numbered parts are not kept as standard service parts.

SAFETY	REF NO.	DESCRIPTION & NAME	QTY.	CU-E12QB4R	REMARK
	1	CHASSIS ASSY	1	CWD52K1277	
	2	SOUND PROOF MATERIAL	1	CWG302719	
	3	FAN MOTOR BRACKET	1	CWD541167	
	4	SCREW - FAN MOTOR BRACKET	2	CWH551217	
⚠	5	FAN MOTOR	1	ARS6411AC	O
	6	SCREW - FAN MOTOR MOUNT	4	CWH55252J	
	7	PROPELLER FAN ASSY	1	CWH03K1066	
	8	NUT - PROPELLER FAN	1	CWH56053J	
⚠	9	COMPRESSOR	1	5RS102XNA21	O
	10	ANTI - VIBRATION BUSHING	3	CWH50077	
	11	NUT - COMPRESSOR MOUNT	3	CWH561096	
	12	CONDENSER	1	CWB32C3218	
	14	DISCHARGE MUFFLER (4-WAY VALVE)	1	CWB121010	
	15	HOLDER - COUPLING	1	CWH351233	
	16	2 WAYS VALVE (LIQUID)	1	CWB021400	O
	17	3 WAYS VALVE (GAS)	1	CWB011367	O
⚠	19	REACTOR	1	G0C193J00002	O
	20	TERMINAL COVER	1	CWH171039A	
	21	NUT-TERMINAL COVER	1	CWH7080300J	
	22	SOUND PROOF BOARD	1	CWH151274	
	23A	SOUND PROOF MATERIAL	1	CWG302726	
	23B	SOUND PROOF MATERIAL	1	CWG302701	
	25	CONTROL BOARD COVER (TOP)	1	CWH131473	
⚠	26	ELECTRONIC CONTROLLER - MAIN	1	CWA73C8580R	O
⚠	27	TERMINAL BOARD ASSY	1	CWA28K1110J	O
	28	CABINET SIDE PLATE COMPLETE	1	CWE04C1296	
	29	SENSOR COMPLETE (AIR & PIPE TEMP.)	1	CWA50C2825	O
	30	CABINET SIDE PLATE (LEFT)	1	CWE041579A	
	31	CABINET FRONT PLATE CO.	1	CWE06C1360	
	32	CABINET TOP PLATE	1	CWE031148A	
	33	CONTROL BOARD COVER	1	CWH131470A	
	34	CONTROL BOARD COVER COMPLETE	1	CWH13C1253	
	38	4 WAYS VALVE	1	CWB001063	O
⚠	39	V-COIL COMPLETE (4-WAYS VALVE)	1	CWA43C2447	O
	40	WIRE NET	1	CWD041166A	
	44	SENSOR COMPLETE (COMP. TEMP.)	1	CWA50C2830	O
	45	DRAIN HOSE	1	CWH5850080	
	45A	PACKING	1	CWB81012	
	46	BAG	1	CWG861078	
	47	BASE BOARD - COMPLETE	1	CWG62C1144	
	48	SHOCK ABSORBER (RIGHT)	1	CWG713415	
	49	SHOCK ABSORBER (LEFT)	1	CWG713416	
	50	C.C. CASE	1	CWG566848	
	51	HOLDER SENSOR	1	CWH32143	
⚠	52	TERMINAL BOARD ASSY	1	CWA28K1281	O
⚠	53	ELECTRONIC CONTROLLER - DEMAND CONTROL	1	CWA747605	O

(NOTE)

- All parts are supplied from PAPAMY, Malaysia (Vendor Code: 00029488).
- "O" marked parts are recommended to be kept in stock.

19.3.2 CU-E18QB4R



Note:

The above exploded view is for the purpose of parts disassembly and replacement.
The non-numbered parts are not kept as standard service parts.

SAFETY	REF NO.	DESCRIPTION & NAME	QTY.	CU-E18QB4R	REMARK
	1	CHASSIS ASSY	1	CWD52K1191	
	2	ANTI - VIBRATION BUSHING	3	CWH50077	
⚠	3	COMPRESSOR	1	5RD132XBC21	O
	4	NUT - COMPRESSOR MOUNT	3	CWH561096	
	5	SOUND PROOF MATERIAL	1	CWG302656	
	6	FAN MOTOR BRACKET	1	CWD541126	
⚠	7	FAN MOTOR	1	CWA951620	O
	8	SCREW - FAN MOTOR BRACKET	3	CWH551217	
	9	SCREW - FAN MOTOR MOUNT	3	CWH551040J	
	10	PROPELLER FAN ASSY	1	CWH001019	
	11	NUT - PROPELLER FAN	1	CWH561092	
	12	CONDENSER	1	CWB32C3230	
	14	EXPANSION VALVE	1	CWB051016J	O
	15	4 WAYS VALVE	1	CWB001026J	O
	18	HOLDER - COUPLING	1	CWH351227	
	19	3 WAYS VALVE (GAS)	1	CWB011338	O
	20	2 WAYS VALVE (LIQUID)	1	CWB021454	O
	22	SOUND PROOF BOARD	1	CWH151198	
	23	TERMINAL COVER	1	CWH171039A	
	24	NUT - TERMINAL COVER	1	CWH7080300J	
	25	SENSOR CO. (COMP DISC.)	1	CWA50C2656	O
⚠	27	V-COIL COMPLETE	1	CWA43C2169J	O
⚠	28	V-COIL COMPLETE (EXPAND VALVE)	1	CWA43C2257	O
	30	SENSOR CO. (AIR AND PIPE TEMP.)	1	CWA50C2517	O
⚠	31	REACTOR	1	G0C153J00007	O
⚠	32	TERMINAL BOARD ASSY	1	CWA28K1281	O
⚠	33	TERMINAL BOARD ASSY	1	CWA28K1110J	O
⚠	38	ELECTRONIC CONTROLLER - MAIN	1	CWA73C8581R	O
	40	CONTROL BOARD COVER (TOP)	1	CWH131333	
	41	CABINET SIDE PLATE COMPLETE	1	CWE041317A	
	42	HANDLE	1	CWE161010	
	43	CABINET SIDE PLATE	1	CWE041318A	
	45	CABINET FRONT PLATE CO.	1	CWE06K1084	
	46	WIRE NET	1	CWD041128A	
	47	CABINET TOP PLATE	1	CWE031083A	
	48	CONTROL BOARD COVER COMPLETE	1	CWH13C1185	
	49	DRAIN HOSE	1	CWH5850080	
	50	PACKING	1	CWB81012	
	51	CONTROL BOARD COVER	1	CWH131332	
	58	SOUND PROOF MATERIAL	1	CWG302521	
⚠	63	CAPACITOR - FM (3.0MF/460V)	1	DS461305QP-A	
⚠	65	ELECTRONIC CONT. - NOISE FILTER	1	CWA747986	O
	68	SOUND PROOF MATERIAL	1	CWG302766	
	69	SOUND PROOF MATERIAL	1	CWG302629	
	70	BAG	1	CWG861154	
	71	BASE BOARD - COMPLETE	1	CWG62C1082	
	72	SHOCK ABSORBER	1	CWG712879	
	73	SHOCK ABSORBER	1	CWG712880	
	74	C.C. CASE	1	CWG565614	

(NOTE)

- All parts are supplied from PAPAMY, Malaysia (Vendor Code: 00029488).
- "O" marked parts are recommended to be kept in stock.