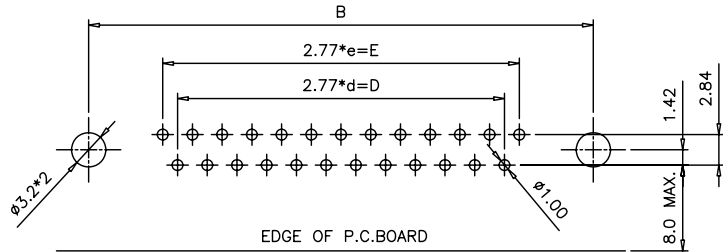
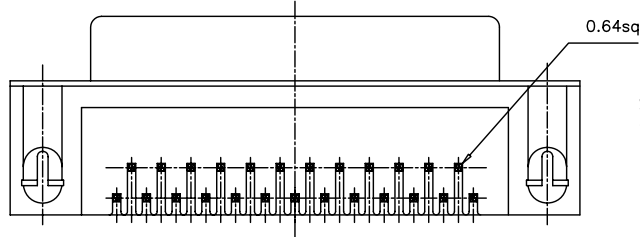
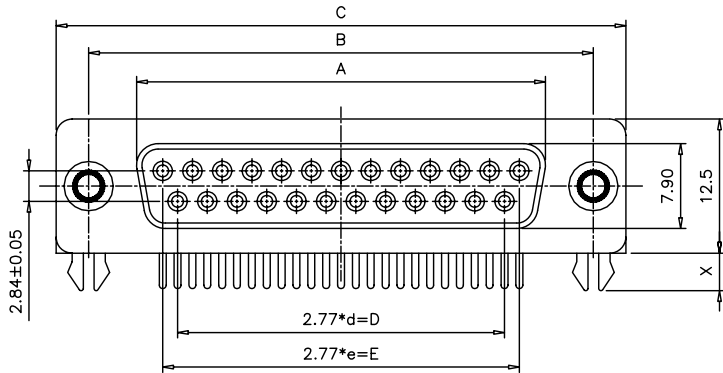
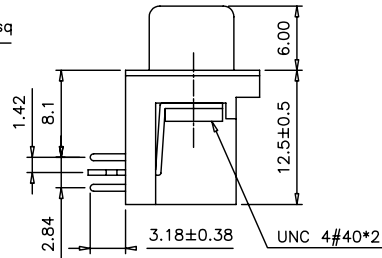


RevNo	Revision note	Date	Signature	Checked
A	ORIGINAL	05-27-10		



RECOMMENDED P.C.B LAYOUT (TOP VIEW)  
TOLERANCES: ±0.05mm

POSITION	A	B	C	d	D	e	E
09F	16.30	25.00	30.8	03	08.31	04	11.08
15F	24.60	33.30	39.2	06	16.62	07	19.39
23F	35.30	44.30	50.3	10	27.70	11	30.47
25F	38.30	47.10	53.1	11	30.47	12	33.24
37F	54.80	63.50	69.4	17	47.09	18	49.86



**PARTS DIMENSION TABLE**

parts no.	DIM. a	DIM. b	inner thread
B	4.8	11.8	4#40
D	5.8	12.0	4#40
F	4.8	11.8	M3
W	4.8	11.8	M2.6
Y	5.8	12.0	M2.6
10	4.8	11.8	4#40+Washer
12	4.8	13.8	4#40

**SPECIFICATION**

**MATERIAL**

Insulator: Thermal Plastic UL94V-0  
 Contacts: Copper Alloy  
 Shell: Steel  
 Rivet, Boardlock: Copper Alloy  
**CONTACT PLATING**  
 Underplate: 50µ" Nickel  
 Contact Area: 1µ"~30µ" Selective Gold  
 Solder Tails Area: 100µ" Tin/Lead(Brighten Tin) or  
 100µ" Tin/Lead Free(Brighten Tin/Matt e Tin)

**ELECTRICAL**

Operation Voltage: 250 VAC Max.  
 Current Rating: 3 Amps Max.  
 Contact Resistance: 15 mohms Max.  
 Insulation Resistance: 3000 Mohms Min @ 500 VDC  
 Dielectric Withstanding Voltage: 1000 VAC / Minute  
 Operating Temperature: -55°C To +105°C

**PART NO.**

D-SUB-205 A X XX X X X X B X X  
 1 2 3 4 5 6 7 8 9 10 11

**1.SERIES NO.**

2.TYPE: A=Standard

**3.ENVIRONMENT PROTECTION**

**MATERIAL:**

-=General  
 J=SONY SS-00259(Reserved)  
 K=SONY SS-00259(Matte Tin)  
 (Reserved)  
 E=RoHS  
 F=RoHS(Matte Tin)

**4.CONTACT NUMBER:**

09 15 23 25 37

**5.CONTACT TYPE:**

F=Female(PBT)  
 S=Female(PA6T)  
 K=Female(PA9T)  
 B=Female(PBT+Phosphor Bronze)  
 Y=Female(PBT)(BU501 Only)

**6.CONTACT AREA PLATING:**

G=Gold Flash  
 S=Gold Flash (Selective)  
 R=5µ" Gold (Selective)  
 A=5µ" Gold (Selective)  
 B=10µ" Gold (Selective)  
 C=15µ" Gold (Selective)  
 D=30µ" Gold (Selective)

**7.SHELL PLATING:**

T=Tin Plated  
 N=Nickel Plated  
 Z=Zinc Plated

**8.PROCESS OPTION:**

B=Rivet W/Boardlock  
 (Dim. X=3.85mm)  
 D=Rivet W/Boardlock  
 (Dim. X=3.5mm)

**9.PARTS OPTION:**

B=4#40 Thread Rivet  
**10.PARTS DIMENSION**  
 A=Non Accessories  
 B=Loose Hex-Screws(4.8\*11.8)  
 D=Loose Hex-Screws(5.8\*12)  
 F=Loose Hex-Screws(4.8\*11.8)  
 M3 Inner Thread  
 W=Loose Hex-Screws(4.8\*11.8)  
 M2.6 Inner Thread  
 Y=Loose Hex-Screws(4.8\*11.8)  
 M2.6 Inner Thread  
 10=Loose Hex-Screws(4.8\*11.8)  
 +Washer  
 12=Loose Hex-Screws(4.8\*13.8)

**11.INSULATOR:**

1=White  
 2=Blue  
 3=Black

GENERAL TOLERANCES  
 ( UNLESS SPECIFIED )  
 DIMENSION STYLE : MM ( INCH )

	MM	INCH
4 PLACES	±.---	±.---
3 PLACES	±.---	±.---
2 PLACES	±.020	±.---
1 PLACES	±.030	±.---
0 PLACES	±.050	±.---
ANGULAR	± 5°	

THIRD ANGLE PROJECTION

FINISH  
 SEE NOTES

MATERIAL  
 SEE NOTES

DRAWN BY DATE  
 REMY 05-27-10

CHECKED BY DATE  
 CAROL 05-27-10

APPROVED BY DATE  
 ---



TITLE  
 D-SUB R/A, FEMALE, TH, 7.2mm

SIZE A4 DRAWING NO.  
 D-SUB-205AXXXXXXBXX

SCALE NONE SHEET 1 OF 1 REV. A